

Nylon Insulated Ring Terminals with Support Sleeve

2622 AWG Nylon Insulated Ring with Copper Support Sleeve

Material: Tin Plated Copper with Butted Seam

Insulation Material: Yellow 6/6 Nylon with Funnel Entry Copper Support Sleeve

Maximum Electrical Current: 9 Amps

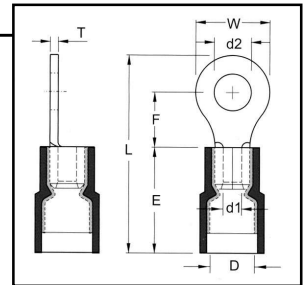
Barrel ID (d1): .039

Maximum Electrical Rating: 75°C, 600V

Barrel OD (D): .098

Material Thickness (T): .0197

Barrel Length (E): .327



HOFFMAN PART NO.	STUD SIZE	DIMENSIONS (INCHES)				UL	TAPE MOUNTED REEL QTY	DIE FOR TAPE MOUNTED	HAND TOOL
		STUD DIAMETER	TONGUE WIDTH	STUD CLEARANCE	LENGTH				
		d2	W	F	L				
FND2622-2/J	2	.126	.205	.228	.657	Y	NA	NA	YNT2622
FND2622-3.7/J	4	.126	.205	.228	.657	Y	NA	NA	YNT2622
FND2622-M3/J	6	.146	.205	.228	.657	Y	NA	NA	YNT2622
FND2622-4/J	8	.169	.260	.303	.760	Y	NA	NA	YNT2622

2216 AWG Nylon Insulated Ring with Copper Support Sleeve

Material: Tin Plated Copper with Butted Seam

Insulation Material: Red 6/6 Nylon with Funnel Entry Copper Support Sleeve

Maximum Electrical Current: 18 Amps

Barrel ID (d1): .067

Maximum Electrical Rating: 105°C, 600V

Barrel OD (D): .177

Material Thickness (T): .030

Barrel Length (E): .433

HOFFMAN PART NO.	STUD SIZE	DIMENSIONS (INCHES)				UL	TAPE MOUNTED REEL QTY	DIE FOR TAPE MOUNTED	HAND TOOL
		STUD DIAMETER	TONGUE WIDTH	STUD CLEARANCE	LENGTH				
		d2	W	F	L				
FND2216-S3	4	.126	.217	.197	.728	Y	1000	3V2216	YNM2210D
FND2216-M3	6	.146	.260	.248	.803	Y	1000	3V2216	YNM2210D
FND2216M4	8	.169	.260	.248	.803	Y	1000	3V2216	YNM2210D
FND2216-4	8	.169	.315	.276	.858	Y	1000	3V2216	YNM2210D
FND2216-5	10	.209	.315	.276	.858	Y	1000	3V2216	YNM2210D
FND2216-6	1/4	.252	.457	.433	1.094	Y	1000	3V2216	YNM2210D
FND2216-8	5/16	.331	.457	.433	1.094	Y	1000	3V2216	YNM2210D
FND2216-9	3/8	.413	.535	.547	1.240	Y	1000	3V2216	YNM2210D

